

GARDEN OF EDEN INVESTMENT GROUP INC

Vertically Integrated Supply Chain For Green-Built Sustainable Homes

8 The Green, Suite R Dover Delaware, 19901 USA

www.GoInvestmentGroup.com (818) 309-8725

PM GREEN ENERGY PROPOSAL

Solar Powered Disaster Relief Housing Factory

PM Green Energy

OFF-GRID SELF-POWERED DISASTER RELIEF HOUSING

PM GREEN ENERGY PROPOSAL

Solar Powered Disaster Relief Housing Factory

Our Solution

- ▶ Natural Disasters are increasing in frequency, scale and publicity
- ▶ Excessive suffering and death related to lack of electricity following catastrophic events
- ▶ Restoring power, even temporary power, takes time
- ▶ Finding accommodations near the recovery site is challenging even after power is restored
- ▶ Fuel for gas generators is scarce and expensive following natural disasters
- ▶ Fuel transport is continual, time-consuming and often costs more than the fuel itself
- ▶ Current solutions are not sustainable or eco-friendly (noxious, noisy, toxic)
- ▶ Any delay in providing relief is reported as federal/state/local agency inefficiency

PM GREEN ENERGY PROPOSAL

Solar Powered Disaster Relief Housing Factory

Our Solution

OFF-GRID, SELF-POWERED HOUSING UNITS

- ▶ Provides immediate relief for survivors of disasters, safe/secure housing for assessors/first responders and work crews, reliable sanitary structures for humanitarian efforts.
- ▶ Requires no external permanent or temporary electricity for occupancy/operation
- ▶ Eliminates the need for fossil fuel generators
- ▶ Removes the expense, time and effort needed for routine fuel deliveries
- ▶ Patented power system has no moving parts - requires minimal maintenance
- ▶ Units delivered ready-for-occupancy - no delay in providing relief
- ▶ Improved agency efficiency



GOE Investment Group and Jackson Mississippi, based PM Green Energy have been in discussions regarding a joint venture agreement to fund a disaster relief factory to make all the 6 product lines that PM Green Energy currently manufactures in their 1000 sq foot facility.

Meetings are underway with PM Green Energy , negotiating with City Planning Department of Tylertown MS that is potentially interested in donating 30 acres of land for the construction of a Disaster Relief Factory to produce high volume of affordable Off-Grid Solar-Powered Disaster Relief Housing to produce the 6 product lines as shown below:



**Haven
Family Housing Unit**
•2 Bedrooms - sleeps 4 to 6

**Nomad
Workforce Housing/Man
Camp**
•2 Bedrooms - sleeps 4 or 8

**Oasis
Medical Clinic**
Design/layout pictured here is a customizable shell that can be configured to meet your medical/clinical needs. T

**Horizon
First Responder/ Command
Housing**
•2 Bedrooms - sleeps 4

**Atlas
Command/Control Center**
•6 - 8 Workstations
•Private Office/Conference Room

**Sentinel
Guard Shack**
Guard shacks range in size-- 8' x 8' to 8' x 30' and can be configured for 2 workstations, 2 Bunks, Kitchen, Bathroom. Ac/Heat

GOE Investment Group and Jackson Mississippi, based PM Green Energy have been in discussions regarding a joint venture agreement to fund a disaster relief factory to make all the 6 product lines that PM Green Energy currently manufactures in their 1000 sq foot facility.

Our Solution



PM GREEN ENERGY PROPOSAL

Solar Powered Disaster Relief Housing Factory

Our Solution

- ▶ **Versatile** - Our THU's (temporary housing units) are extremely versatile and can be used as emergency housing, offices, command centers, medical clinics, guard posts, temperature-controlled storage or even grow houses
- ▶ **Durable** - Built using structural insulated panels (SIP's), energy-efficient materials and our patented ROGUE solar technology, they are constructed for **strength, durability and sustainability**
- ▶ **Portable** - THU's were **designed with portability in mind** - pre-disaster they can be staged and ready to deploy at a moment's notice, post-recovery they can be decommissioned and redeployed at other sites
- ▶ **Customizable** - THU's are customizable. We can modify existing units or design a custom solution as needed. Our floor plans can be configured to meet sleeping and working requirements and our ROGUE technology can be scaled to match specific electrical consumption patterns in order to provide **optimum power day and night**

PM GREEN ENEGY PROPOSAL

Solar Powered Disaster Relief Housing Factory

Our Solution

- ▶ The global market is comprised of a wide variety of verticals:
 - ▶ Disaster Relief Housing
 - ▶ Man Camps/Workforce Housing/Migrant Guest Worker Housing
 - ▶ Tiny Homes Communities
 - ▶ Accessory Dwelling Units (ADU's)
 - ▶ Remote/Off-Grid Dwelling
 - ▶ Hunting and Fishing Camps
 - ▶ Portable Hotel Rooms for Sporting/Musical/Seasonal Events & Festivals
 - ▶ Preppers
 - ▶ Renewable/Sustainable Housing
 - ▶ Homeless Housing

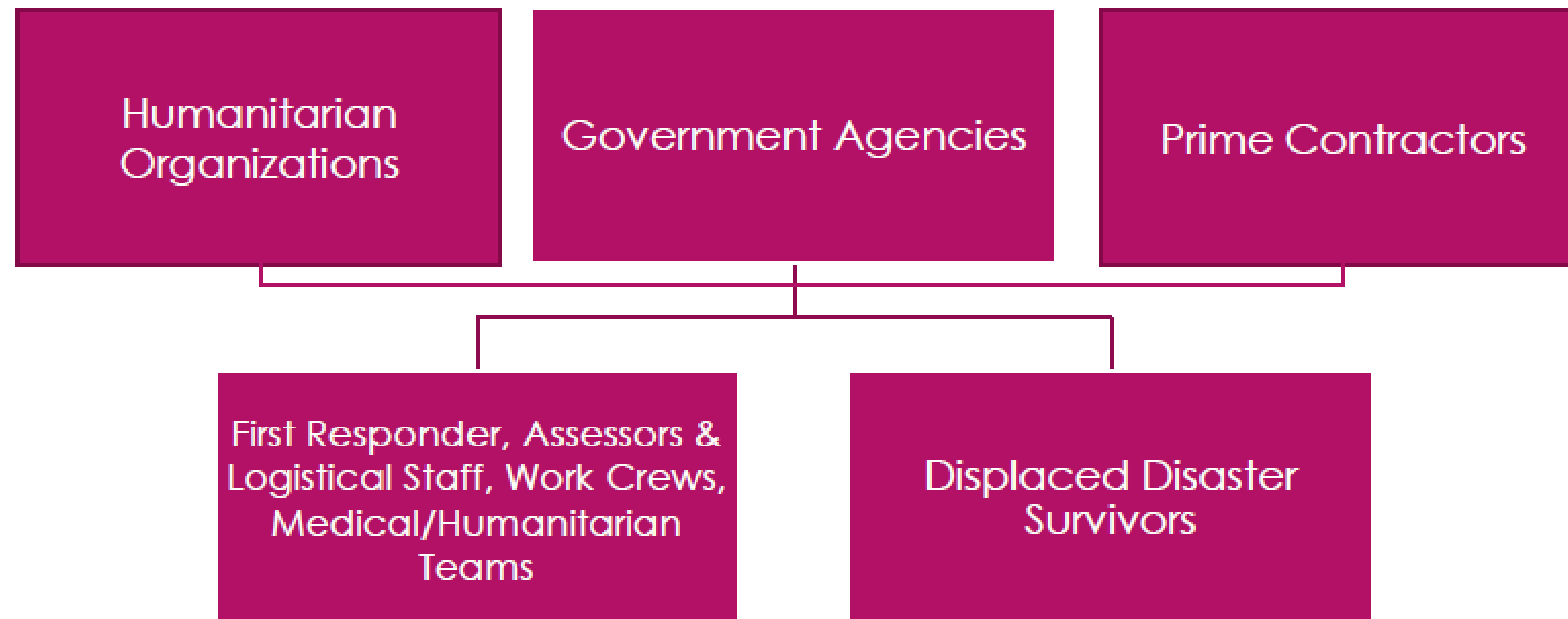
PM GREEN ENERGY PROPOSAL

Solar Powered Disaster Relief Housing Factory

Our Solution

- ▶ Government Agencies
 - ▶ FEMA, HUD, USACE, MILITARY
 - ▶ State & Municipal Emergency Management Bureaus
 - ▶ Veteran's Affairs/Housing
- ▶ Prime Contractors
 - ▶ Cotton, Fluor etc.
- ▶ Humanitarian Organizations
 - ▶ Red Cross, Samaritan's Purse, Habitat for Humanity
 - ▶ UN, World Health Organization, etc.
 - ▶ Gates Foundation, et. al.

Target Market: Two Revenue Streams



Each segment within the market requires housing for two purposes: their own workers and displaced survivors of disasters

PM GREEN ENERGY PROPOSAL

Solar Powered Disaster Relief Housing Factory

Our Solution

- ▶ Natural disasters are increasing in frequency and scale globally
- ▶ Our units were designed at the request of FEMA and created to their exacting specifications
- ▶ Patented self-powered system protects market share and offers runway for growth
- ▶ Our pricing is less than historically paid for disaster relief housing units - even with the solar component
- ▶ An inventory of deployable units allows for immediate post-disaster sale or lease to government agencies
- ▶ Sales pipeline can be expanded to include other verticals from the robust off-grid housing market

PM GREEN ENERGY PROPOSAL

Solar Powered Disaster Relief Housing Factory

Our Solution

- ▶ PMGE is seeking \$25 Million to purchase and open a production facility capable of manufacturing our solar-powered housing units with the goal of producing an inventory of 300 in year one.
- ▶ The startup costs, including the building acquisition (with five acres of land) and necessary improvements are estimated at \$1.5 million
- ▶ First year operating expenses are projected to be \$1.57 million, including payrolls of \$1.2 Million for up to 22 employees
- ▶ Remaining funds will be used to purchase inventory parts for manufacturing our solar powered housing units
- ▶ Future expansions adjacent to the first facility and other plant locations are already under consideration

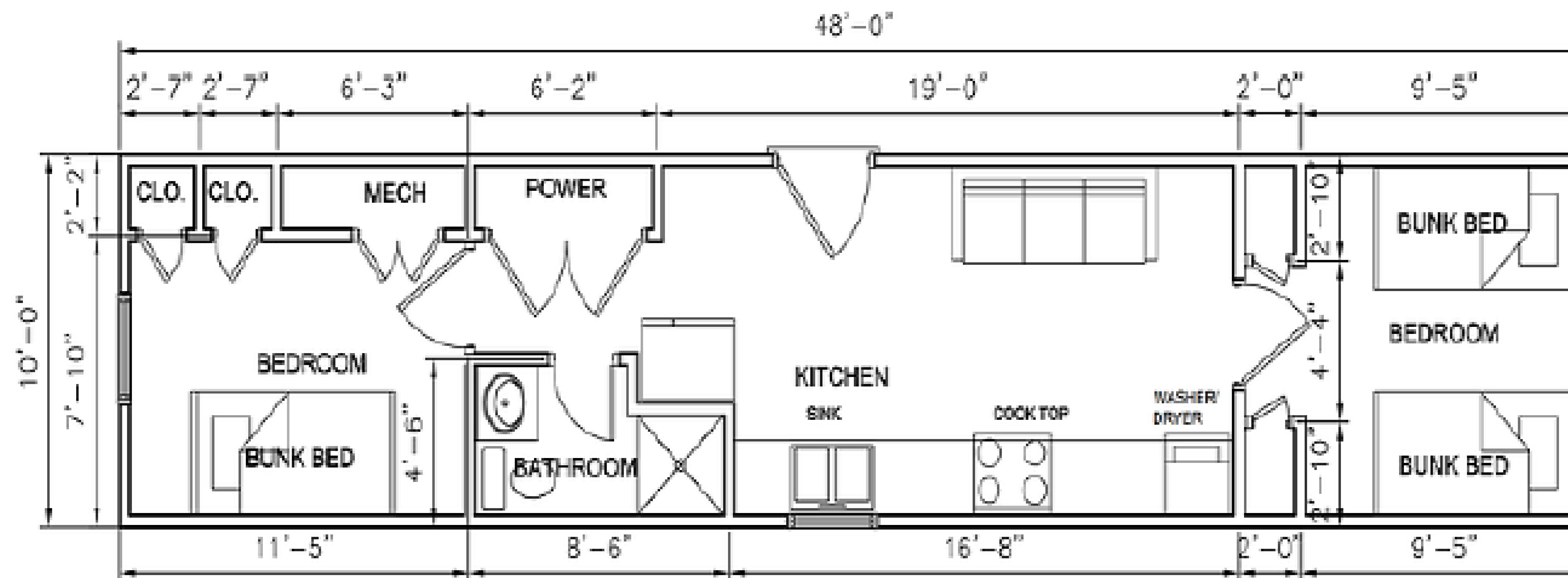
Appendix

Our Current Models

- ▶ Horizon
- ▶ Haven
- ▶ Nomad
- ▶ Atlas
- ▶ Oasis
- ▶ Sentinel

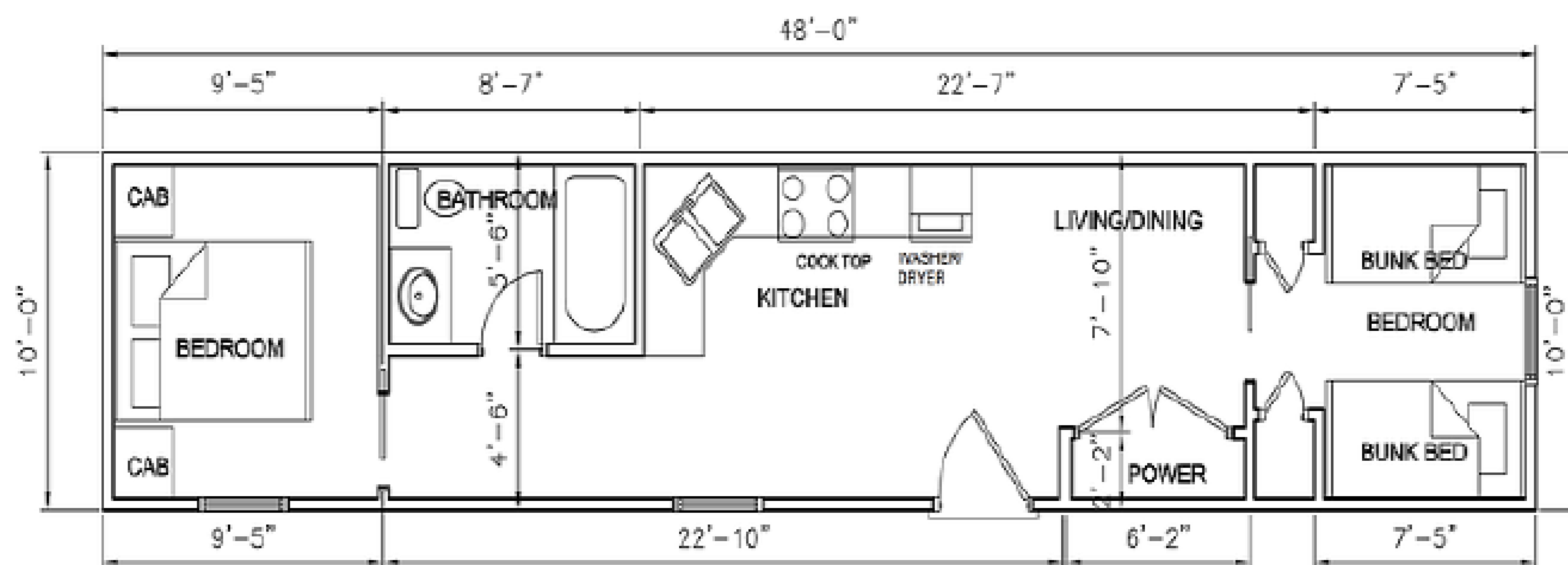
Appendix: Horizon

- ❖ 2-Bedroom First Responder/Command Housing unit, sleeps 4, bathroom with shower, kitchen, workstation, hot water, HVAC and washer/dryer combo



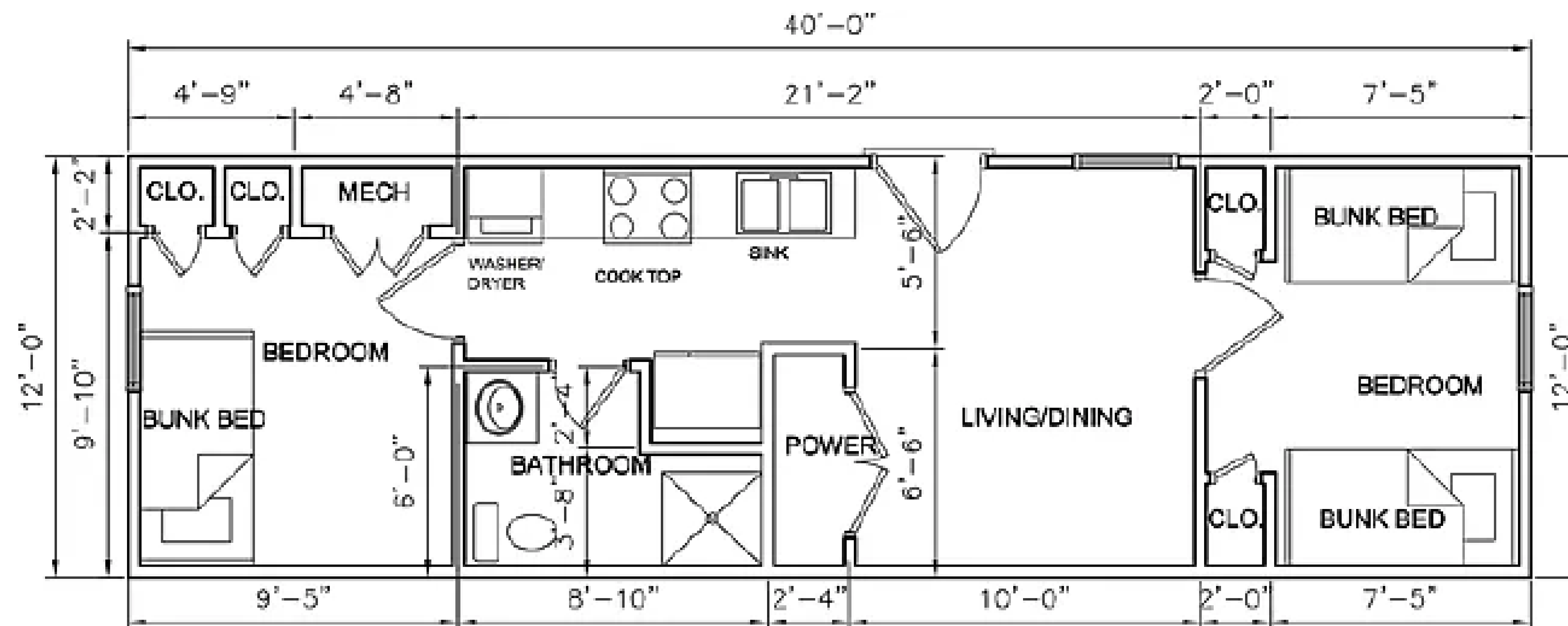
Appendix: Haven

- ❖ 2-Bedroom Family Housing unit, sleep 4-6, full bathroom with bathtub, kitchen, and living/dining area, hot water, HVAC and washer/dryer combo



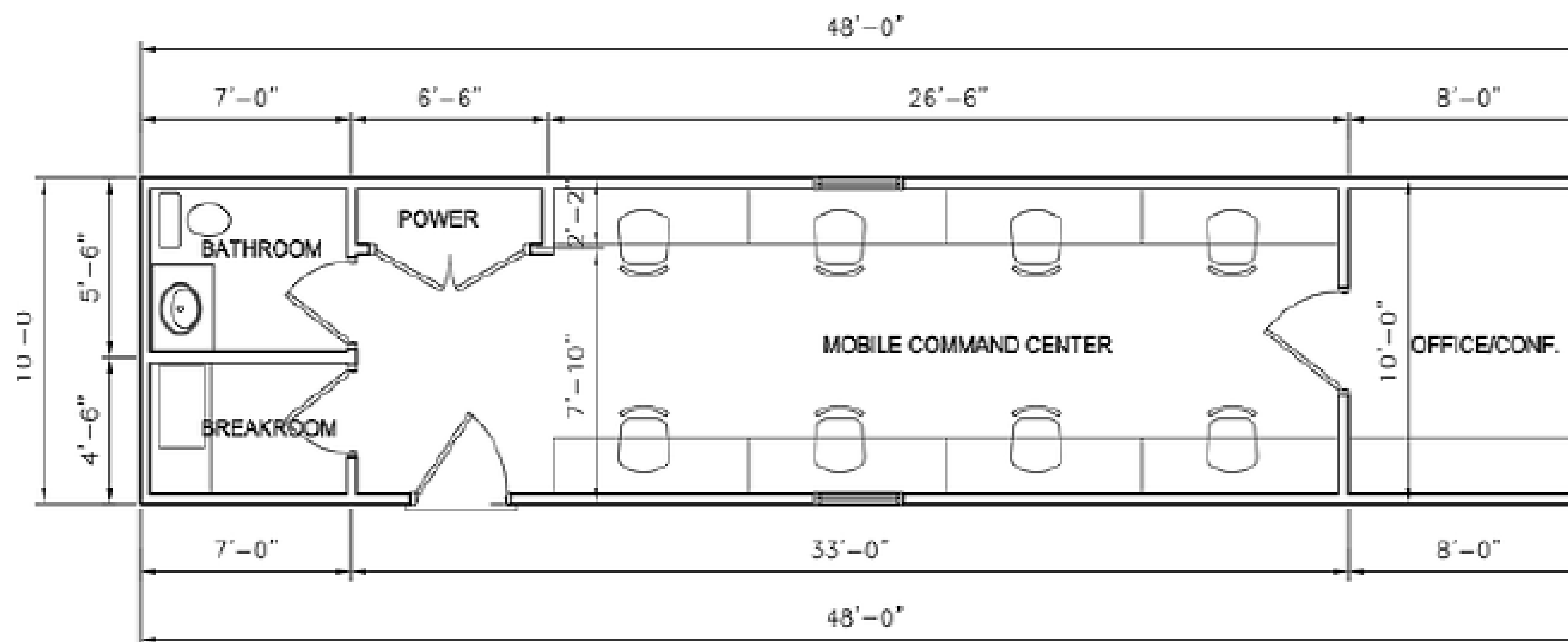
Appendix: Nomad

- ❖ 2-Bedroom Workforce Housing unit/Man Camp, sleeps 6, bathroom with shower, kitchenette, hot water, HVAC and washer/dryer combo, plus charging station for hand tool batteries



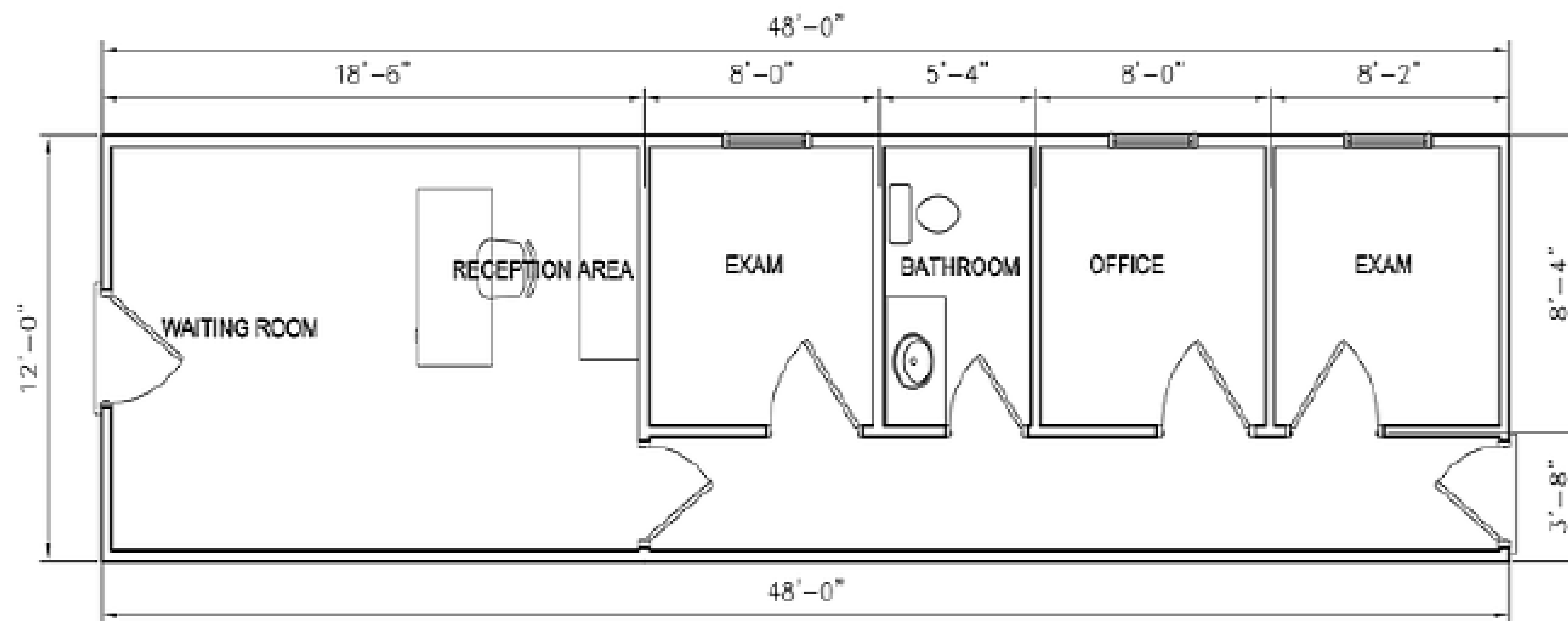
Appendix: Atlas

- ❖ Command/Control Center, 6 – 8 workstations, private office/conference room, ½ bathroom, break area, hot water and HVAC



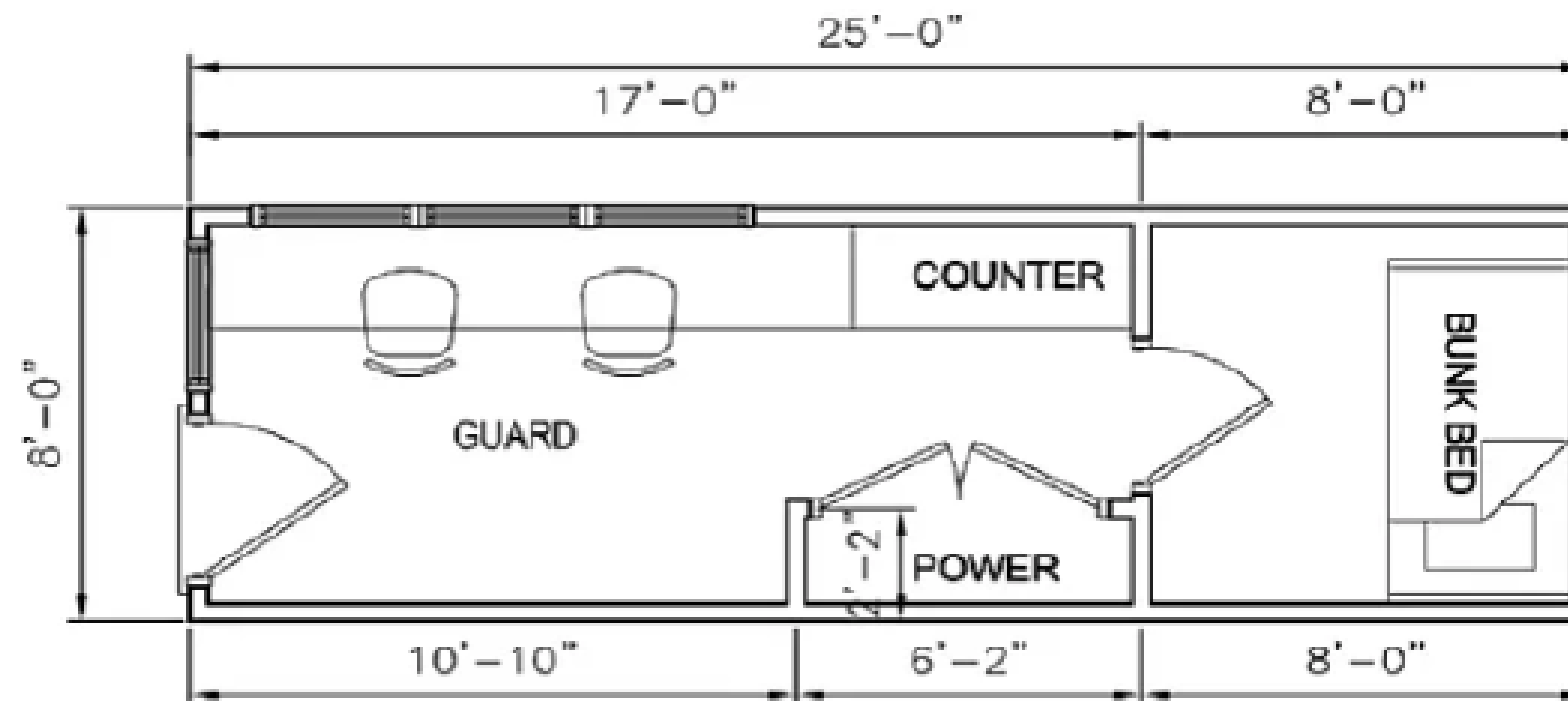
Appendix: Oasis

- ❖ **The Oasis** – Medical Clinic, waiting room, office, two exam rooms, and ½ bath, hot water and HVAC



Appendix: Sentinel

- ❖ Guard Shack/Guard Post, temperature-controlled with two workstations, and two bunks in storage area



Appendix: ISU-90 Rogue Generator

- ▶ The ISU-90 Rogue Generator is rapidly deployable which means it can be set up in a couple hours but can provide clean electricity to a forward or remote base camp within minutes of delivery



Appendix: ISU-90 Rogue Generator

- ▶ The system can provide 6800 watts of constant power with surges of up to 12000 watts.
- ▶ Provides roughly 43 kilowatt-hours of clean electricity per day, or 1300 kilowatt hours per month.
- ▶ (About the same as a household with a \$200/month electric bill.)



Contact Information



GARDEN OF EDEN INVESTMENT GROUP INC

Vertically Integrated Supply Chain For Green-Built Sustainable Homes

8 The Green, Suite R Dover Delaware, 19901 USA

www.GoInvestmentGroup.com (818) 309-8725

Rodger Dewey, President

GOE Investment Group INC

(818) 309-8725

rodger.dewey@GoInvestmentGroup.com